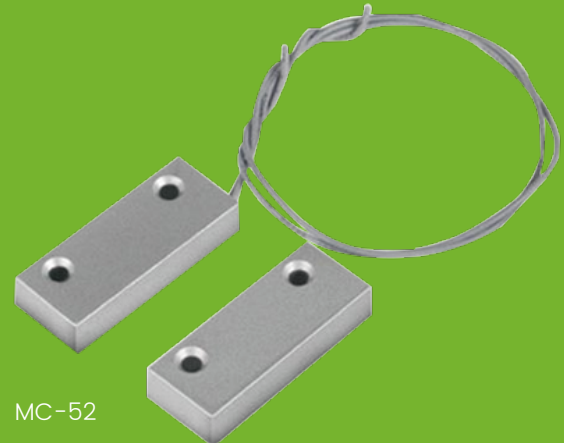


## Overhead Door Mount N.C. Magnetic Contact



MC-52

### What is Magnetic Reed Switch?

The reed switch is an electrical switch operated by an applied magnetic field. ...

The switch may be actuated by an electromagnetic coil, making a reed relay, or by bringing a permanent magnet near it.

When the magnetic field is removed, the contacts in the reed switch return to their original position.

### What are magnetic reed switches used for?

A reed switch is an electromagnetic switch used to control the flow of electricity in a circuit.

They are made from two or more ferrous reeds encased within a small glass tube-like envelope, which become magnetised and move together or separate when a magnetic field is moved towards the switch.

### Specifications

|                               |  |
|-------------------------------|--|
| <b>Sensing distance:</b>      | 25-35mm                                  |
| <b>Hole distance:</b>         | 33mm                                     |
| <b>Switch form:</b>           | NO-Normally Open/NC-Normally Close/NO+NC |
| <b>Electrical parameters:</b> | maximum power 10W                        |
|                               | working voltage 100VDC                   |
|                               | working current 0.5A                     |
| <b>Scope of application:</b>  | metal doors/windows/cabinet              |
| <b>Current:</b>               | 0.1A                                     |
| <b>Voltage:</b>               | 100VDC                                   |
| <b>Power:</b>                 | 3w                                       |
| <b>Shell material:</b>        | zinc alloy, silver gray plating          |

### Dimensions

